



# GUARDIAN TECHNICAL CONTRACTING

KSA • UAE • UK • JORDAN • POLAND • QATAR • KUWAIT • BAHRAIN

2024  
PROFILE

We work hard, so you don't have to.



✉ info@gtcgulf.com

🌐 www.gtcgulf.com

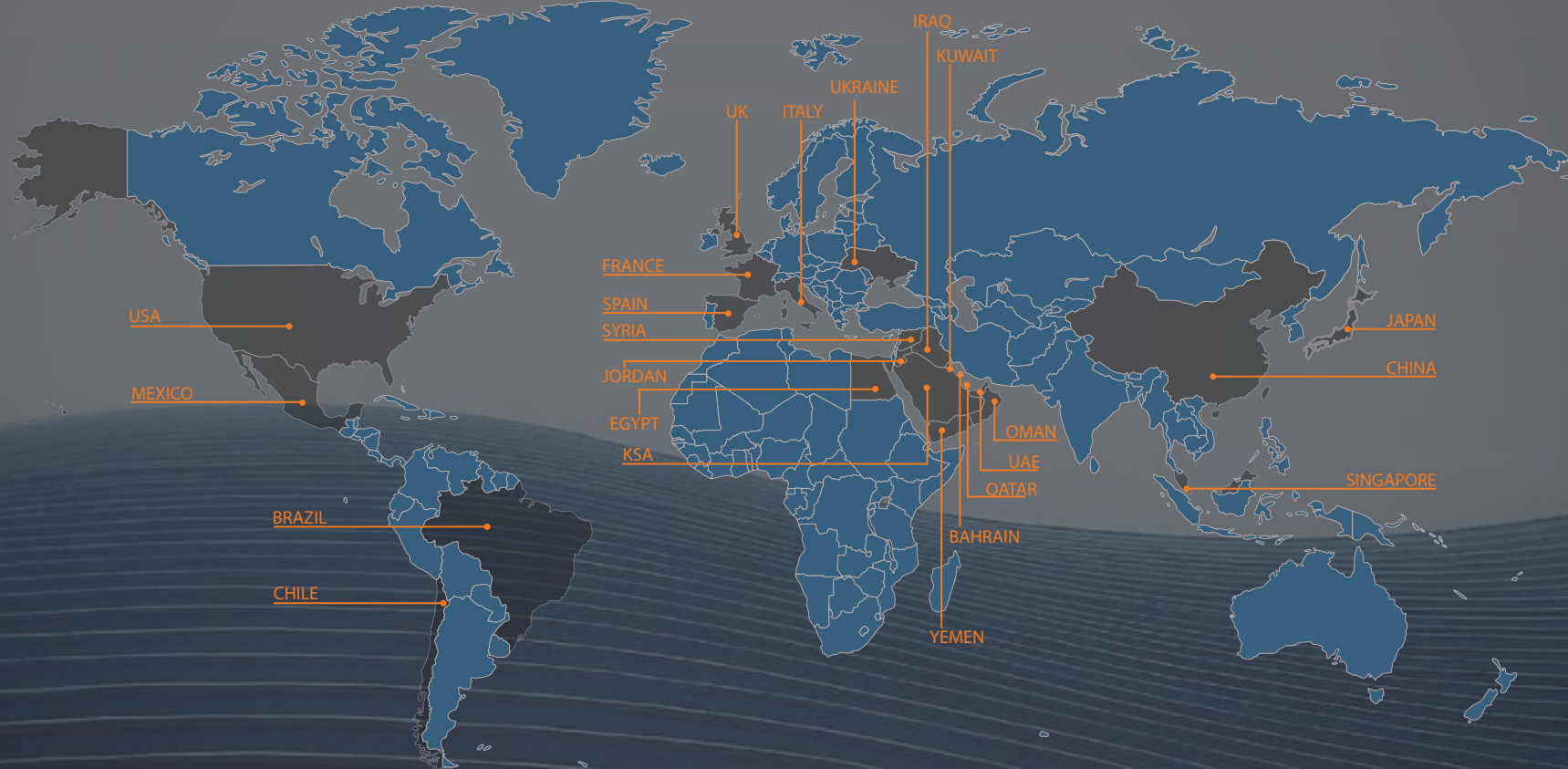


MEMBERSHIP ID - 1298801



# GUARDIAN TECHNICAL CONTRACTING

## GTC GLOBAL COVERAGE







# GUARDIAN TECHNICAL CONTRACTING

	<b>Section 1</b>		<b>Section 3</b>		
<b>ABOUT US</b>	<b>Our Strategy</b>	<b>04</b>	<b>Construction</b>	<b>38</b>	
	<b>Our Mission &amp; Vision</b>	<b>07</b>	<b>Catering</b>	<b>40</b>	
	<b>Health &amp; Safety</b>	<b>09</b>	<b>Aviation Fueling</b>	<b>42</b>	
	<b>Environmental Policy</b>	<b>11</b>	<b>Oil &amp; Gas</b>	<b>45</b>	
	<b>Communication &amp; Security</b>	<b>13</b>	<b>NTV/MHE Leasing</b>	<b>50</b>	
	<b>Performance Spotlights</b>	<b>14</b>	<b>Logistics</b>	<b>52</b>	
			<b>IT &amp; Communication services</b>	<b>54</b>	
	<b>Section 2</b>		<b>Section 4</b>		
<b>DESIGN &amp; CONSULTATION</b>	<b>GTC Cabins and Units</b>	<b>16</b>	<b>MANUFACTURING</b>	<b>Lights (LED)</b>	<b>57</b>
	<b>Aramco Container</b>	<b>22</b>		<b>HVAC</b>	<b>58</b>
	<b>Prefabrication Structures</b>	<b>25</b>		<b>Socket's &amp; Switches</b>	<b>59</b>
	<b>Airport Infrastructure</b>	<b>33</b>		<b>Fire Rated Cladding</b>	<b>60</b>
	<b>Military Base Support</b>	<b>35</b>		<b>Triple Glazing Windows</b>	<b>61</b>
			<b>Section 5</b>		
			<b>Clients &amp; Partners</b>	<b>62</b>	

# OUR STRATEGY



Our main strategy, is to guarantee efficient and effective communication to respond quickly. We distinguish ourselves from the competition by being constantly adaptable organization. GTC has a variety of expertise in regards, construction, life support, management, logistics and communications as key strength when completing any project. We are known for exemplifying resilience and innovation when needed to enhance quality of delivery. GTC always aim to improve service by evaluating and improving business processes to enhance output and efficiency. We are pleased to mention this strategy is the key to our longevity and prosperity.





# MISSION & VISION



# OUR MISSION & VISION

## Mission

Our Main Mission is to establish ourselves as a leader in our field, we distinguish ourselves from other consultancy firms by guaranteeing capacity to deliver creative and cost-effective solutions for our client's. Our main priority is to forge long lasting partnerships, by consistently providing exceptional service, quality and value.

## Vision

GTC main vision is be in the forefront partner and solution providers, to guarantee growth and success. We aspire to be a world-renowned consulting firm, globally respected for our superior expertise, support and commitment to achieving quantifiable results across a variety of industries.





# HEALTH & SAFETY



## HEALTH

- Staff members are thoroughly screened and briefed on any potential health and safety issues before being deployed to any international site
- To guarantee that they can provide first-level support to other employees, staff will also receive first-aid training at various levels.
- We always have at least one trained paramedic on our team.

## SAFETY

- Before being sent to the contract, all employees participate in a two-day training course. The topics of security, employment conditions, and health & safety will be all covered in this course.
- All workers are provided with protective clothes, eye protection, gloves, and boots in addition to any necessary standard tools for the position they will fill.
- All staff participates in a 15-minute daily brief in addition to their original training, which will reinforce important concepts and raise awareness of any specific situational changes



# ENVIRONMENTAL POLICY





# ENVIRONMENTAL POLICY

- We understand the value of the local ecology and will make sure that the project is carried out with the environment in mindset at all stages.
- We use green building practices at the clients' request and have staff members who are certified by the LEED (Leadership in Energy and Environmental Design) Green Building Rating System™.
- We minimize the amount of disturbance to the natural habitat by carefully coordinating the work-plan for camps and project sites.
- Waste is kept to a minimum and, if possible, is disposed of at a licensed facility under-recognized procedure.
- When producing, using, and disposing of our products and supplies, we take care of minimizing their negative environmental effects.
- Our vehicles are regularly serviced to ensure they run efficiently and use less fuel.





# COMMUNICATION & SECURITY



# COMMUNICATION & SECURITY

## COMMUNICATION

Two-way radios are provided to every team working on a project or camping site to provide the best possible communication at all times.

For backup, team leaders and section heads have mobile phones, and the site office will have at least one satellite phone in case of a communication breakdown, and all site locations have quick access to the internet.

Within the GTC site office, a communications center is set up for constant contact with all stakeholders, to gather the most recent intelligence, keep everyone informed of changes or new requirements, and maintain and disseminate security protocols.

## SECURITY

GTC understands the necessity for a well-coordinated, well-organized plan to manage the security of our local and expatriate workers, work crews, villagers residing at the work site and along its key transport routes, and any guests we may have at our project work sites.

The extremely limited local difficulties will be considered in our project-specific security strategy, but it will also fully account for the environment's constant change and the ongoing threat posed by mines.



# PERFORMANCE SPOTLIGHTS

01

## TAXI WAY:

GTC's specialty is heavy construction from infrastructure to aircraft taxiways and road works we have completed over 20,000km of taxiways and roadworks in the past 10 years across 9 countries.

02

## MEDICAL CLINIC:

GTC completed two clinics for Prime Medical Group, working on both locations simultaneously and completing both projects to perfection in just 8 months putting the task ahead of schedule by 48 days. Prime Medical Hospitals and clinics being CDC credited mean all their establishments must be built and pass inspections under the UL and NFPA standards. GTC was responsible for the entire design and construction of both new locations Al Quases and Ajman branches.

03

## YANBU PROJECTS:

GTC has been working in Yanbu area since 2012 in the past subcontracting projects servicing both the US ARMY and US Marines with this mind we have a great understanding of the local environment to complete all tasks requested more efficiently.

04

## VEHICLE LEASE:

GTC is the only USG Vendor with a fully functioning workshop and carwash located within Prince Sultan Air Base, only minutes away from both the LSA and Ops Town, and not only inside the base, but we also give our clients access to over 1700 service points in KSA outside the base. We Have dealt with the USG and coalition forces for over 10 years we understand the importance of providing the standards to meet our client's acceptance



GUARDIAN TECHNICAL CONTRACTING

## PERFORMANCE SPOTLIGHTS

At GTC through our wide partnership and strong network we have established internationally. We have developed a reliable and trustworthy ideal, always meeting our commitments. Always priding ourselves on efficiency guaranteeing flexibility with our clients.

We have successfully implemented over 1000 different projects in multiple different countries in the GCC region, some of which are KSA, UAE, Qatar, Bahrain, Oman, and Kuwait. We have diversified our project locations by venturing into Iraq, Syria, Jordan, Egypt, Yemen, Poland, UK and the US to name a few.







# GTC CABINS & UNITS

# GTC CABINS AND UNITS

GTC manufactures a wide range of units and cabins to satisfy customer needs. Guarantee easy mobilization and installation. All GTC units include pre-installation, including all MEP works for example lighting, HVAC and power etc. After installation additional furniture can be installed easily and quickly. Below identifies the types of GTC units available and what they include.

## OFFICE CABIN UNIT

The GTC units come pre-installed with, all MEP works included. They come in 2 different sizes so they will meet all your requirements. The first size is 6x3.65M and second size is 12x3.65m. The main advantages of purchasing GTC Office Cabin units are that they allow for easy stress-free mobilization and installation. Examples of exterior of the unit shown below.







# GTC CABINS AND UNITS

## PORTABLE TOILET UNIT

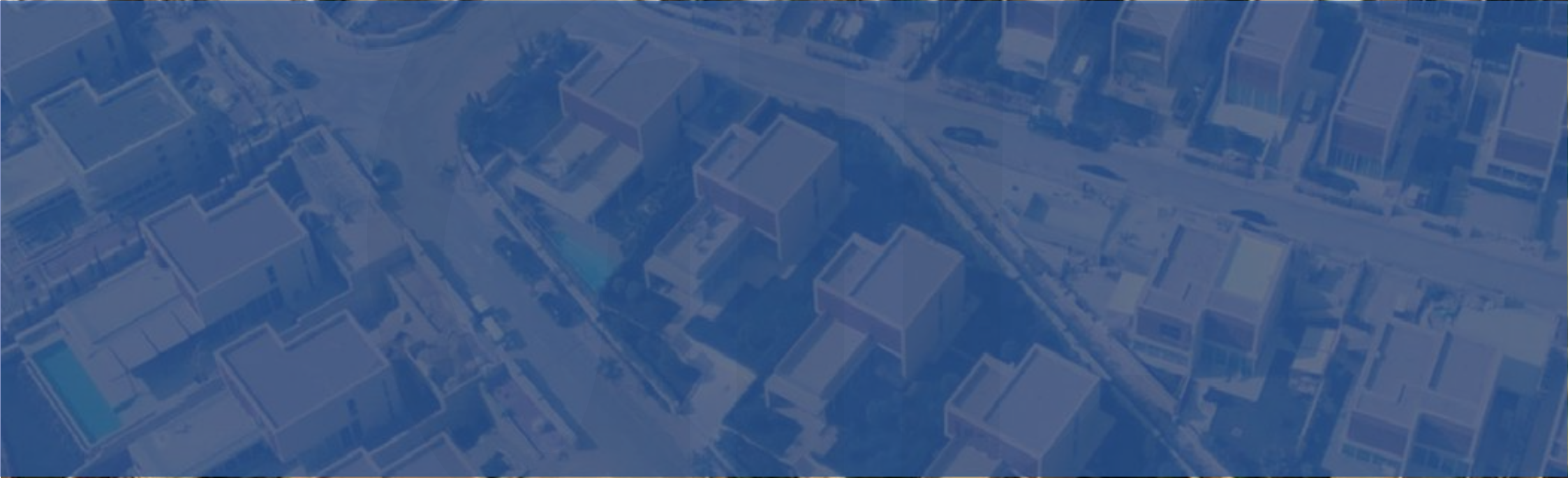
GTC portable toilet unit is a pre-installed fully functional toilet. Including separate septic and water tanks. Easy and fast installation and mobilization. No matter the size of your company GTC cabins cater to all businesses. The units come in 2 sizes, 6x3.65m and 12x3.65m. All MEP, is included, specifically including a Sani flow system to automatically transfer waste.

## PORTALOO UNIT

GTC Portaloo includes a single toilet unit, with all MEP, a separate water and septic tank included. The unit size is 2x2m, with a very easy installation and mobilization.







# GTC CABINS AND UNITS

## 01 PORTABLE SHOWER UNIT

GTC portable shower unit, is a fully functional pre-installed shower. Including separate septic and water tank. All MEP, is included, installation is efficient and sturdy. GTC portable shower units are 6x3.65m. These units are perfect for any office size and use.



## 02 ABLUTION UNIT

GTC Ablution units, very accessible and includes pre-installation. Suitable for businesses of all sizes, fast mobilization, easy set-up. All MEP, including separate septic and water tanks included. GTC offers two sizes for these units 6x3.65m and 12x3.65m unit.



## 03 SECURITY CABIN UNIT

PEAX Security units, have a sturdy and strong exterior, built with the best material. The interior of the unit, is pre-installed and includes all MEP. Any additional furniture can be installed after the cabin. PEAX offers these cabins in one size, 3x3m.





# CONTAINERS



# ARAMCO CONTAINERS

GTC has become an authorized vendor of Saudi Aramco for Cargo.

We have proven on multiple occasions that we can meet all required standards in relation to these freight containers. We guarantee protection and quality of condition of storage containers.

We prioritize atmospheric protection, guaranteeing protection against any weather conditions, preventing dust and corrosion. At GTC we focus on meeting and overperforming on standards and regulations. This is shown by our packaging, packing and space management while transporting. Our measured approach is further shown when loading and unloading, clients' precious supplies. At GTC we prioritize training our staff in correct loading, unloading, safety requirements. At GTC we understand some containers will be transporting items with hazardous material, our staff are well accustomed to handling these with the utmost safety. At GTC we prioritize inspecting quality of all containers, guarantee cleanliness and Limited Damage.





# PREFAB STRUCTURE

# PREFABRICATED STRUCTURES

GTC has expertise in the design and manufacturing prefabricated structures. Our many years of expertise allows us to excel in producing these structures with a high quality at a small percentage of the cost. GTC manufactures a variety of different types excellently, for example hospitals, office buildings, hospitals and steel structures just to name a few.

The main benefits of purchasing pre-fab buildings, is the utilization of recycle and top-quality material, which guarantees sturdiness and quality of the structures. GTC best quality materials, guarantee quick set-up and energy efficiency, while executing design and efficiency perfectly.









# TYPES OF PREFABRICATED BUILDINGS



## OFFICE

We offer a variety of prefabricated offices that can be customized to fulfill your needs. We have a stellar track record of adopting, manufacturing and delivering high quality modular office spaces. We have created multiple temporary to permanent office buildings, GTC has pride in their manufacturing and delivery capabilities. Our modular office structures provide quick housing options for a variety of market sectors. No matter if it's a permanent extension or temporary office space, it will be made with exceptional craftsmanship and come with great features.



## HOSPITAL

Prefabricated modular hospitals are built with a high level of building safety, taking into account the heavy use, as well as ergonomic space planning and hygienic structures. Due to their benefits of a demount-able high-tech quick production system, quick assembly, and affordable prices, our modular buildings provide a significant alternative to conventional structures. Our healthcare facilities can include sections like management offices, labs, doctor and patient rooms, polyclinics, operation rooms, WCs, and shower units, and they are built by international standards.



# TYPES OF PREFABRICATED BUILDINGS

## PREFABRICATED TEMPORARY SLEEPING ACCOMMODATION

We have a variety of design of sleeping accommodation. GTC guaranteeing secure and warm sleeping accommodation when staying on site is necessary. These accommodations allow your workforce to be flexible and encourage efficiency in the work process. GTC prefabrication guarantees a cozy layout and attractive appearance while also providing a sturdy appearance. Due to this, a need required by work-sites can be easily met.



## MODULAR CAFETERIA AND DINING HALLS

GTC excels at providing both temporary and permanent prefabricated dining halls. We guarantee a quick installation and allow for customization to meet your needs. We have quickly become a market leader when it comes to guaranteeing design, quality and efficiency. GTC prefabrication offers flexibility in design, color and type.



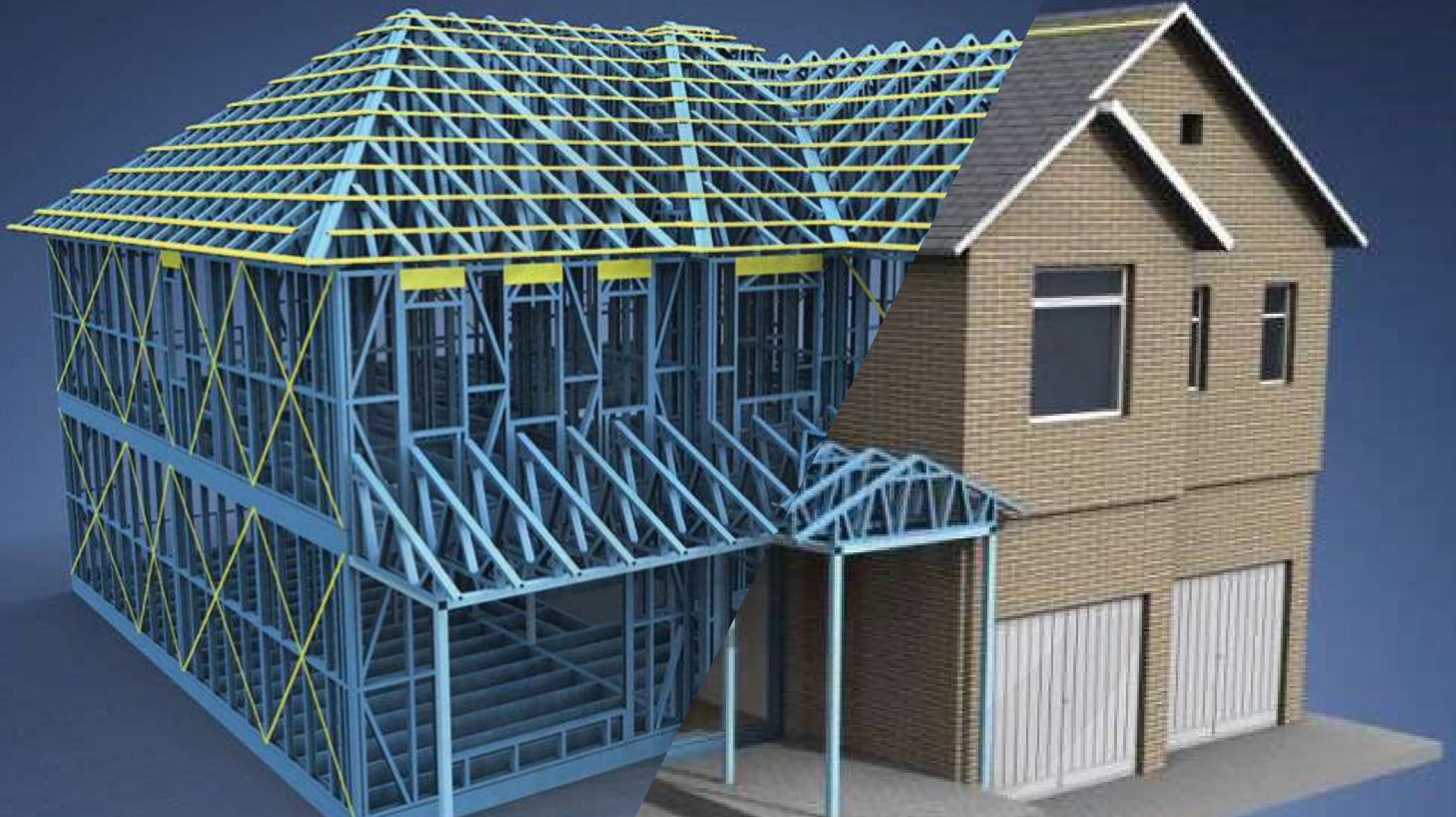
# TYPES OF PREFABRICATED BUILDINGS

## LAUNDRY, WC & SHOWER

GTC is a well-known brand name that manufactures prefabricated toilets and showers following global standards. For all forms of public social facilities, building sites, mines, oil fields, international trade fairs, parks, gardens, sporting organizations, the tourism industry, road construction sites, etc., we are delivering WC and Shower solutions. GTC manufactures prefabricated portable restrooms and shower facilities only from materials that have received quality certification. We produce various WC and shower unit combinations following global quality requirements.







# STEEL STRUCTURES

# TYPES OF PREFABRICATED BUILDINGS

## STEEL STRUCTURES

GTC exemplifies the creation of Prefab Steel structures by providing high strength and light weight material. The popularity of these structures is justified because it utilizes innovation in design, quality and strength while encouraging sustainable values. GTC steel structures allow to reinforce structures in locations prone to extreme climate, making it simple to produce spaces which are often impossible. Design and innovation are emphasized while keeping reliability and durability of buildings, allowing for long lasting buildings.



# AIRPORT INFRASTRUCTURE





# AIRPORT INFRASTRUCTURE

GTC provide in depth analysis helping you navigate all regulations and industry challenges you may have faced. With multiple years of expertise in the field we can guarantee comprehensive service while evaluating risks and providing technical support. At GTC we take a very measured and holistic approach. We prioritize providing the client with the assurance and the confidence to feel safe. Our services cover a variety of services, including but not limited to planning, design, construction and maintenance services. We provide impartial and in-depth assessments that help to increase operational availability, boost cost-effectiveness, and provide legal certainty.





# MILITARY BASE SUPPORT

GTC offers a wide range of services including for modular buildings, prefab offices, POD toilets, tower pads, fencing, road works, architectural and structural works, renovation, power networks, IT and communication, logistics, aviation fueling, base operations, life support, NTV and MHE leasing, and catering services. We prioritize executing all tasks with efficiency, guaranteeing proper equipment, management and labor





# MILITARY BASE SUPPORT

## ARCHITECTURAL SERVICES

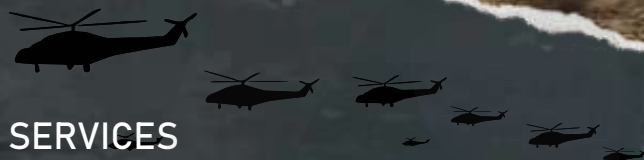
We have a wide range of expertise in military security projects, with a wide range of architectural experience to realize any project. GTC expertise lies in design and engineering as well co-operation with foreign government organizations. We are a globally recognized organization with a proven track record. GTC thrives in harsh, arid and isolated regions, provide support from the planning process through to construction and management services. The whole range of military installation projects are covered by GTC's multidisciplinary capabilities, from buildings and utilities to airport and waterfront amenities. These are as follows, Architectural design technical detailing, Sustainable building science, Interior design, medical planning, and 3D animation/visualization.

## FACILITIES MANAGEMENT

Hard Facilities Management, GTC provides a range of customized facilities management services, from planned and preventative maintenance to reactive maintenance, for clients in the corporate and government sectors. Support services include, for instance, building maintenance, electricity generation, plumbing repair, electrical and HVAC installation and maintenance.

Soft Facilities Management, the comprehensive facilities management solution that GTC is able to provide customers incorporates services for both hard and soft facilities management. Among the soft facilities management services, we provide cleaning, lawn care, pest control, bulk water delivery, removal of black and grey water, garbage removal, and security services.





## MILITARY BASE SERVICES

**BULK WATER SUPPLIES BOTH CHLORINATED AND NON-CHLORINATED** Each month, GTC offers more than 1,000,000 gallons of bulk chlorinated and non-chlorinated water. To guarantee that US Government sanitary criteria are met, the source of this water is tested each month, and records of these tests and evaluations are kept.

## PORTABLE LATRINE AND HANDWASH STATION SUPPLY

GTC operates strictly under the Berry Amendment Act and prioritizes "Made in America" items for export markets. GTC has discovered that the high quality of US-made items means that the design and construction of these products takes into account harsh weather conditions.

## TRASH REMOVAL SERVICES

Following the governmental regulations, we have experience removing medical waste and hospital garbage by building custom trash containers that are appropriately labeled. Our "best practice" includes a tight focus on Health, Safety, and Quality as well as disposing of trash following local regulations.

## BLACK AND GRAY WATER REMOVAL SERVICES

This experience is related to the trash removal and is focused on adhering to legal requirements in the states or nations where we operate and following health and safety regulations. Nearly 900,000 gallons of such trash are being removed monthly by GTC.

## FUEL SUPPLY SERVICES

The bulk fuel is provided by GTC in any quantity needed and can be placed into any bladder or fixed storage device. GTC has provided bulk fuel in designated below-ground storage tanks in some sites, or at the very least, 50-gallon tanks with hand pumps.





# CONSTRUCTION





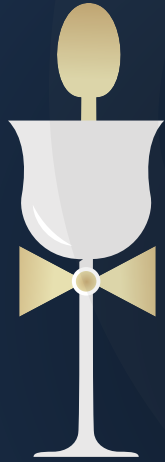
# CONSTRUCTION

GTC offers comprehensive design and builds solutions in the engineering and construction industries; Instead of several contractors we combine architecture and construction teams into a single entity to deliver the best results. Our experts and engineers use effective design and build strategies to the final construction which prevents costly problems from arising during construction, enable operations to run smoothly, meet regulations, oversee budgets, monitor schedules, and deliver high-quality projects to our customers in the private and public sectors both nationwide and internationally.





**GUARDIAN TECHNICAL CONTRACTING**



**Catering**  
SERVICES





GTC prioritizes quality of service, a bespoke customer experience specifically tailored to our clients needs. We bring a team of seasoned chefs with decades of expertise to uplift culinary experience while guaranteeing guests are left fulfilled. We specialize in a wide range of cuisines, priding ourselves on authenticity and adaptability to type of event.

Our Exceptional customer service allows for meticulous attention to detail while maintaining a tailored experience. Therefore, here at GTC we are able to cater to a small gathering, large corporate event and military exercises, while providing an extensive and customizable menu to create a distinctive style, thereby enhancing the experience as a whole. Our unwavering commitment to service and product standards is evident across all aspects of our operations.





# AVIATION FUELLING



# AVIATION FUELING

GTC has cemented itself as a provider of aviation fueling in the middle east, partnering with multiple leaders of the field including, Jetex, KH Inc., Aramco among others. Here at GTC we prioritize sustainability and environmental in all our work.

Aviation fuel is a type of petroleum- or kerosene-based fuel used to power airplanes. In comparison to other forms of transportation, aircraft fuel is of higher quality. Kerosene, kerosene-biofuel, kerosene-gasoline, and other fuels are used to make it in different combinations.





# OIL & GAS



# OIL & GAS

GTC entered the industry with goal of establishing dominance in the sector and the region. We offered unapparelled expertise and in-depth knowledge in all aspects including refineries, storage, pipelines and drilling. We at GTC prioritize expertise specifically in design, construction and management phases.



# STORAGE TANKS





## OIL & GAS STORAGE TANKS

In the Oil & Gas industry we are a leader in developing storage tanks, specializing in engineering and procurement of steel tanks. With a variety of design and capabilities, here at GTC we provide a wide range of services maximize performance. These include providing industry leading systems and guaranteeing the highest level of safety.

- Heat Sensors
- Recycle System
- Over Flow System
- Dislodging System
- Exciting System
- Drain Water Draw-off System
- Deep Hatch System
- Inlet & Outlet System
- Full Instrumentation Components
- Rain Water Drain System
- Fire-Fighting Systems (Detection System)
- First Attack System, Fixed Foam Compacting System
- Level Indicators
- Cooling System
- Test Sampling System
- Fluid Level Gauge Glass





# DRILLING

# OIL & GAS DRILLING

Through its fully integrated global partners, GTC provides Onshore, Offshore, and Well Services. GTC is responsible for overseeing an offshore fleet of jack-up barges and rigs in addition to drilling and work-over rigs for usage on land. In addition, a wide range of good services provided by GTC enables it to provide Turnkey Drilling Projects. Among the services provided by GTC are: Our firm provides well services to the oil and gas sector to fulfill client needs. Our services include drilling fluids, cementing, mud logging, wireline logging, directional drilling, and completion rig support. Our services are executed efficiently to deliver optimal results for our clients. Our goal is to provide a comprehensive solution for all good service needs.

## OFFSHORE SERVICE:

- Drilling
- Work-over.
- Well servicing.
- Platform maintenance.
- Marine vessel operations.
- Remote Operated Vehicle (ROV) Services
- Hydraulic Work-over (HWO) Services.
- Surveying.

## ONSHORE SERVICES:

- The construction of production
- Exploration and appraisal oil and gas and certain other types of wells
- Including vertical, deviated and horizontal wells
- Ranging from a depth of approximately 1,200 meters to some wells in over 6,400 meters.





# NTV/MHE LEASING

**1,200**  
**Vehicle Lease**

**1,200**  
**Fleet**

**950**  
**Workshop Location**

**4**  
**Onsite Workshops**

**109**  
**Mobile Mechanics**

**4,000**  
**Fueling Points**



# NTV/MHE LEASING



**TRUCKS**

**HEAVY VEHICLES**



**CARS / SUV**

GTC has an extensive record of past experience of NTV and Vehicle leasing. We currently hold multiple BPAs covering NTV & MHE Leasing. GTC prides themselves on a variety of types of vehicles and amount of vehicles depending on the size and type of the project. We guarantee safety and security of the transport, this will be shown in the overall reliability of GTC Vehicles. GTC can hire a variation of vehicles. For example; dump trucks, forklifts, excavators, graders, loaders, telehandlers, cranes up to 50 tons, generators and front shovels. In any given situation GTC will have a vehicle suitable for the job.



# LOGISTICS

- ✔ Procurement
  - In and Out-bound Transportation
- ✔ & Management
- ✔ Inventory and Cost Control
- ✔ Document Control
- ✔ Warehousing
- ✔ Materials Handling
- ✔ Order Fulfillment
- ✔ In-country Procurement
- ✔ In-country Transportation/Shipping
- ✔ Warranty Administration



# LOGISTICS

GTC provides transport in any given environment or condition. Whether it is air freight, Sea Freight, or ground transport, Guardian Technical Contracting can transport any materials or products you may need. Our staff, with an average of ten years' experience, are very skilled in SCM. This understanding makes GTC one of the leading companies in the transport of resources. GTC has the best expertise, which makes us very efficient in transporting goods in any scenario. The logistics department doesn't only transfer materials, it branches out to catering and accommodation allowing GTC to improve the surroundings of the country. We also branch into shipping to all countries. The logistics team is highly skilled and organized, which leads to economies of scale.







# IT & COMMUNICATION SERVICES



# IT & COMMUNICATION SERVICES

Here at GTC we understand the importance of communication and how majority of issues can be prevented by guaranteeing effective communication. When working in remote areas where access to communication equipment is very limited. We understand the significance of establishing dependable and efficient communications methods when executing successful projects. At GTC we have a great track record with providing, dependable, consistent and fast communication in relation with a multitude of stakeholders. We are an internationally renowned supplier with multiple successful system installation in the Middle East and Africa.

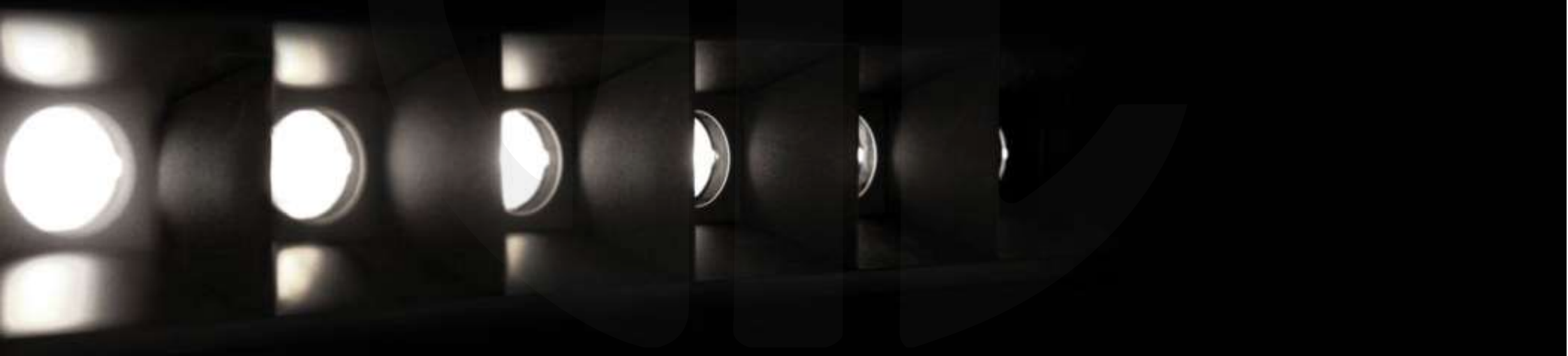


# GTC MANUFACTURING

# GTC MANUFACTURING

## LED

GTC offers and manufacturers a variety of LED lights for residential, commercial and industrial applications. GTC offers a wide range of high-quality LED light fixtures, with a design that complement any décor. GTC is committed to making constant improvement to its products, always adapting to market and customer demands. GTC LED LIGHTING PRODUCTS include: LED Light Fixtures LED Lamps LED Switches LED Circuit Breakers LED Tubes.







# HVAC

GTC products is at the forefront of supplying HVAC and products for a variety of different projects. The company offers high quality and diverse range of products, including ductless mini-split air conditioning system, mounting systems and all accessories complementing systems. GTC Products prioritizes, high quality, efficient and innovative systems that guarantee customer satisfaction. GTC prides itself on it's customer experience, always prioritizing customer satisfaction and service. The company takes time to communicate with customers, to help carefully plan production and guarantee deliverer on time. GTC Products is dedicated to providing the highest quality service and products to guarantee solutions meet customer's needs.

# SOCKETS & SWITCHES

GTC Products, creates a wide range of switches and sockets intended to create a sleek and contemporary appearance while maintaining quality. At GTC we manufacture 13A, 1 gang and 2 gang switches.



# FIRE RATED CLADDING

GTC manufacture and supply a variety of high quality indoor and outdoor cladding. We guarantee a variety of materials that are used of the highest quality. We utilize bamboo to satisfy all the clients needs. We have a variety of colors and designs. At GTC we focus on creating a luxurious atmosphere while guaranteeing safety and quality remain at the forefront of the manufacturing. At GTC we supply fire, moisture and heat rated cladding to provide resistance in any environment. Making your projects functional without compromising on design.

# TRIPLE GLAZING WINDOWS

At GTC we manufacture Triple Glazed Windows, using the highest quality and most sturdy materials. We use UPVC material, able to handle extreme heat and cold temperature from -50 to 30C in temperature. What separates GTC from competitors is we provide specialist windows that protect against argon. At GTC we create customizable designs at low costs while guaranteeing functionality and efficiency. We create rugged and efficient items, without settling on design and customizability.







# CLIENTS & PARTNERS

---

# CLIENTS & PARTNERS





# CLIENTS & PARTNERS

أرامكو السعودية  
Saudi Aramco



AJYAL PETROLEUM & ENERGY



ExxonMobil



# CLIENTS & PARTNERS

ALBADDAD





# CLIENTS & PARTNERS

zain



المهساللندج تارة  
Al Maha Trading



شركة الكهرباء الأردنية المساهمة العامة المحدودة  
Jordan Electric Power Company



# CLIENTS & PARTNERS



Dubai Airports  
Connecting the World

Dubai  
World Central  
A Malcolm International



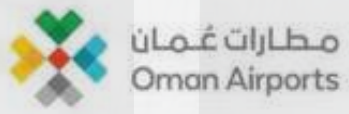
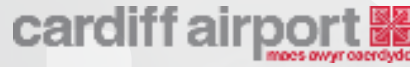
George Best  
BELFAST  
CITY AIRPORT



# CLIENTS & PARTNERS



# CLIENTS & PARTNERS





# CERTIFICATES



# CERTIFICATES

**ISO 9001:2015**



**Certificate of Registration**

**Guardian Technical Contracting**

1501, The Burlington Towers, Marasi Drive, Business Bay, Dubai, United Arab Emirates

IN REGARD TO  
**ISO 9001:2015**  
Quality Management Systems

For the following scope of activities:

Construction, Manufacturing, Logistics, Aviation, Catering, Light and Heavy vehicle leasing, Maintenance Government Contracting, Prefab Structures, Renewable Energy, Consulting and Project Management.

INITIAL ISSUE DATE	14 December 2023
LATEST CERTIFICATION DATE	14 December 2023
CERTIFICATE EXPIRY DATE	14 December 2026
SURVEILLANCE AUDIT DUE BY	14 December 2024
CERTIFICATE STATUS	Full
Certificate No.: 14140909	
Authorized Signature For QA Certification	





To check this certificate status visit: [www.irqao.com](http://www.irqao.com)

Certified that this is an accredited certificate authorized for issue by QA Certification against defined criteria and in cognizance of ISO 17021:2015 'Conformity Assessment - Requirements for bodies providing audit and certification of management systems'. This certificate and its accredited status is only valid when confirmed by the register listed in the International Register of Quality Assessed Organizations: [www.irqao.com](http://www.irqao.com)

This certificate is the property of QA Certification.

**ISO 14001:2015**



**Certificate of Registration**

**Guardian Technical Contracting**

1501, The Burlington Towers, Marasi Drive, Business Bay, Dubai, United Arab Emirates

IN REGARD TO  
**ISO 14001:2015**  
Environmental Management Systems

For the following scope of activities:

Construction, Manufacturing, Logistics, Aviation, Catering, Light and Heavy vehicle leasing, Maintenance Government Contracting, Prefab Structures, Renewable Energy, Consulting and Project Management.

INITIAL ISSUE DATE	14 December 2023
LATEST CERTIFICATION DATE	14 December 2023
CERTIFICATE EXPIRY DATE	14 December 2026
SURVEILLANCE AUDIT DUE BY	14 December 2024
CERTIFICATE STATUS	Full
Certificate No.: 14140909	
Authorized Signature For QA Certification	





To check this certificate status visit: [www.irqao.com](http://www.irqao.com)

Certified that this is an accredited certificate authorized for issue by QA Certification against defined criteria and in cognizance of ISO 17021:2015 'Conformity Assessment - Requirements for bodies providing audit and certification of management systems'. This certificate and its accredited status is only valid when confirmed by the register listed in the International Register of Quality Assessed Organizations: [www.irqao.com](http://www.irqao.com)

This certificate is the property of QA Certification.

**ISO 45001:2018**



**Certificate of Registration**

**Guardian Technical Contracting**

1501, The Burlington Towers, Marasi Drive, Business Bay, Dubai, United Arab Emirates

IN REGARD TO  
**ISO 45001:2018**  
Occupational Health & Safety Management Systems

For the following scope of activities:

Construction, Manufacturing, Logistics, Aviation, Catering, Light and Heavy vehicle leasing, Maintenance Government Contracting, Prefab Structures, Renewable Energy, Consulting and Project Management.

INITIAL ISSUE DATE	14 December 2023
LATEST CERTIFICATION DATE	14 December 2023
CERTIFICATE EXPIRY DATE	14 December 2026
SURVEILLANCE AUDIT DUE BY	14 December 2024
CERTIFICATE STATUS	Full
Certificate No.: 14140907	
Authorized Signature For QA Certification	





To check this certificate status visit: [www.irqao.com](http://www.irqao.com)

Certified that this is an accredited certificate authorized for issue by QA Certification against defined criteria and in cognizance of ISO 17021:2018 'Conformity Assessment - Requirements for bodies providing audit and certification of management systems'. This certificate and its accredited status is only valid when confirmed by the register listed in the International Register of Quality Assessed Organizations: [www.irqao.com](http://www.irqao.com)

This certificate is the property of QA Certification.





**GUARDIAN TECHNICAL CONTRACTING**

# CONTACT US

## KSA

Office 802,  
Al Fardan Building,  
Al Yarmouk2, Al Kurnaish District,  
Al-Khobar, Kingdom of Saudi Arabia

## KSA

Building 3347, Adh Dhahran Street,  
Ath Thuqbah Dist, Al Khobar, 34623  
Al Kharj 16466, Kingdom of  
Saudi Arabia

## KSA

## UAE

1501, The Burlington Tower,  
Marasi Drive, Business Bay,  
Dubai, UAE

## QATAR

2nd floor, 212 Al Mansoura St.,  
Najma, Doha

## UK

71-75 Shelton Street,  
Covent Garden, London,  
WC2H 9JQ, United Kingdom

## POLAND

Ul Krakowska 21, 32-500  
Chrzanów

## JORDAN

Al Swyfeah,  
Near Barakah Mall,  
Amman, Jordan



✉ [info@gtcgulf.com](mailto:info@gtcgulf.com)

🌐 [www.gtcgulf.com](http://www.gtcgulf.com)